

The background of the top half of the page is a dark blue gradient with a complex network of white and light blue lines and dots, resembling a circuit board or a data network. A large white circle is centered on the right side, containing the ACPL logo.

ACPL

passion 4 automation

● BAG MAKING MACHINES

- *SMART* SERVO
- *SMART* SERVO TOUCH
- SIEMENS SERVO MOTOR & DRIVE
- INVT SERVO MOTOR & DRIVE
- STATIC CHARGE ELIMINATOR
- PNEUMATIC PUNCH

● CONVERTING MACHINES

- WEB GUIDE SYSTEM
- AUTO TENSION CONTROL SYSTEM
- MANUAL TENSION CONTROL SYSTEM
- MAGNETIC POWDER BRAKE & CLUTCH

● BLOWN FILM PLANTS

- CORONA TREATER
- AIR BUBBLE CONTROLLER
- ONLINE 1- COLOR FLEXO PRINTING MACHINES
- TORQUE DRIVE & TORQUE MOTOR



www.acpl-india.in

ABOUT US

ACPL is a 30 years young company passionately engaged in machine automation.

ACPL is the first company to introduce servo systems for bag making machines in India. The indigenously developed **SMART SERVO** is a high-end, powerful controller with advanced features for this application. The company has installed 18000 + **SMART SERVO** Systems in India and abroad. **SMART SERVO** System has been a favourite retrofit for many legacy machine owners.

Highly motivated with 'MAKE IN INDIA' and 'VOCAL FOR LOCAL' challenges, the company has introduced many new applications in last two decades which includes web guide system, auto tension controller, manual tension controller, digital torque drive, torque motor, on line flexo printing machine, static charge eliminator, corona treater, air bubble controller and few others.

In-time fastest delivery and high quality testing are two main features of company USP. Having ready stock of mostly all systems, **ACPL** guarantees the delivery within India and outside India with minimum stipulated transportation time only.

In-house 360-degree testing system guarantees a life-long hassle-free experience for the customer. The **ACPL** is being loved by the clientele for its "fit it – forget it" worry-free installation policy. In addition to a detailed user guide, the customer-service department provides a one-call query solution.

ACPL believes in "CUSTOMER IS KING AND CUSTOMER SERVICE IS GOD". A long happy clientele with high retention rate shows that once a customer approaches **ACPL**, joins hands for long term association because of world class quality, reasonably low cost, fast delivery, prompt customer service and above all value for money.

SERVO MOTOR & SERVO DRIVE

SIEMENS SERVO-V90

- **Wide Voltage Range:**
Operates efficiently within a broad voltage range of 380V to 480V, with a tolerance of +/- 10% to accommodate varying power conditions.
- **No Transformer Required.**
- **Premium Motor Bearings.**
- **IP65 Protection.**
- **High-Inertia Servo Motors.**
- **Versatile Power Range :**
Available in a wide power range from 0.4kW to 7kW, providing flexibility for various industrial applications.



• **invt** Da200 3-PHASE SERVO MOTOR & SERVO DRIVE

- **Wide Power Range:** Supports a versatile power range from 100W to 22kW, catering to diverse application needs.
- **High-Speed Response Encoder Compatibility:**
Compatible with 23-bit, 17-bit, and 2500 PPR rotating transformer encoders for flexible integration.
- **Comprehensive Communication Support :**
Fully supports multiple industrial protocols, including EtherCAT, CANopen, Profibus-DP, ProfiNET, and Modbus for seamless connectivity.
- **Precise Cam Profile :** Allows for cam profiles with up to 3600 points, enabling highly accurate motion control.
- **Advanced Position Control:** Achieves 128-segment internal position control for superior precision in motion tasks
- **Gantry Synchronization:** Supports gantry synchronization for coordinated multi-axis control in complex applications.
- **USB Interface:** Standard USB interface for convenient configuration and communication.



SMART SERVO (SSM 2400)



- **16-bit Microcontroller** : Equipped with a powerful 16-bit microcontroller for efficient processing and reliable performance.
- **Complete Noise Immunity** : Features 100% noise immunity, ensuring stable operation even in electrically noisy environments.
- **I/O Flexibility** : Includes 8 digital inputs and 8 digital outputs for versatile integration with various systems.
- **Customizable Key Configuration**: Allows for the customization of keys to meet specific user requirements and enhance usability.
- **SMPS-based Power Supply**: Utilizes a high-efficiency SMPS (Switched-Mode Power Supply) for reliable and energy-efficient operation.
- **Compact Dimensions**: 194mm (H) x 154mm (W) x 52mm (D)
- **Panel Cut-Out**: 180mm (H) x 140mm (W) (vertical orientation)
- **Proven Reliability**: With over 18,000 installations, this system is a trusted choice for a wide range of industrial applications.

SMART SERVO TOUCH - SST-700



BAG MAKING MACHINES

- **Automation-Ready Features:** Designed for seamless integration in machine automation systems. Supports high-speed communication protocols for efficient control and monitoring.
- **Product Specifications:** 7-Inch Full-Color Touch Panel Display
- **Output Frequency:** 200 kHz, supporting 2 points
- **Digital I/O :** 18 Digital Inputs and 18 Digital Outputs
- **Connectivity :** Compatible with EtherCAT, RS-485, and USB modes
- **Power Supply :** 24V DC input
- **Dimensions :** 204 mm (L) x 150 mm (W) x 40 mm (D)
- **Panel Cutout:** 190 mm (W) x 137 mm (H)

ELECTRONIC WEB GUIDE SYSTEM - AEG-4300

- 4.3" Colorful Touch Screen with Live Animated Track Control Display
- **Rapid Response** : Powered by a high-speed processor for seamless and quick interaction.
- **Auto/Manual Mode** : Easily switch between automated control or manual operation, offering versatile functionality for various applications.
- **End-Travel Limit Detection** : Integrated proximity switches automatically detect and indicate the travel limits on both sides, with a visual RED warning on the screen for clear feedback.
- **Custom Branding** : Display your company logo or custom image on startup for enhanced brand visibility.
- **Rugged Durability** : Our controller is crafted with a durable aluminum body, designed to withstand both high temperatures and physical impact, ensuring long-lasting performance and reliability.
- **Input power supply** : 24V DC /10A
- **Output** : 0-24V DC /10A
- **Dimension in mm** : 150mm(W) x 110mm (H) x 40mm (D)
- **Panel Cutout in mm** : 142mm(W) x 102mm(H)



ULTRASONIC SENSOR

- Ultrasonic (US-400S) or photo electric (PS-400S) sensor to detect plastic, paper and fabric.
- Detection Distance : 25mm
- Detection Diameter : 10mm
- Detection Accuracy : 0.1mm
- Response time : 100µs
- Input : 24V DC
- Output : -5Vdc to +5Vdc
- Dimension in mm : 80mm(H)x 90mm(W) x 25mm(D), 40mm sensing length.



ACTUATOR

- The actuator features a high-performance PMDC motor, precision linear ball screw, and guide system with integrated gearing for smooth operation.
- Standard stroke length is 150mm (+/- 75mm), customizable to meet specific needs.
- It offers easy installation, a maintenance-free design, and includes a slider assembly and bar holder for seamless integration.



TRA

ELECTRONIC WEB GUIDE SYSTEM

CONVERTING MACHINES



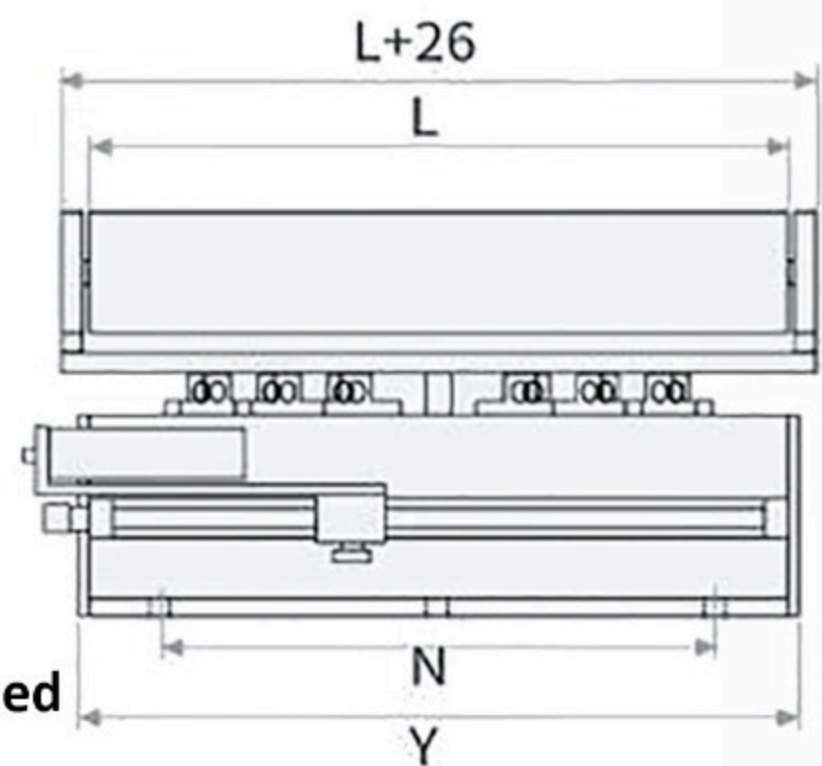
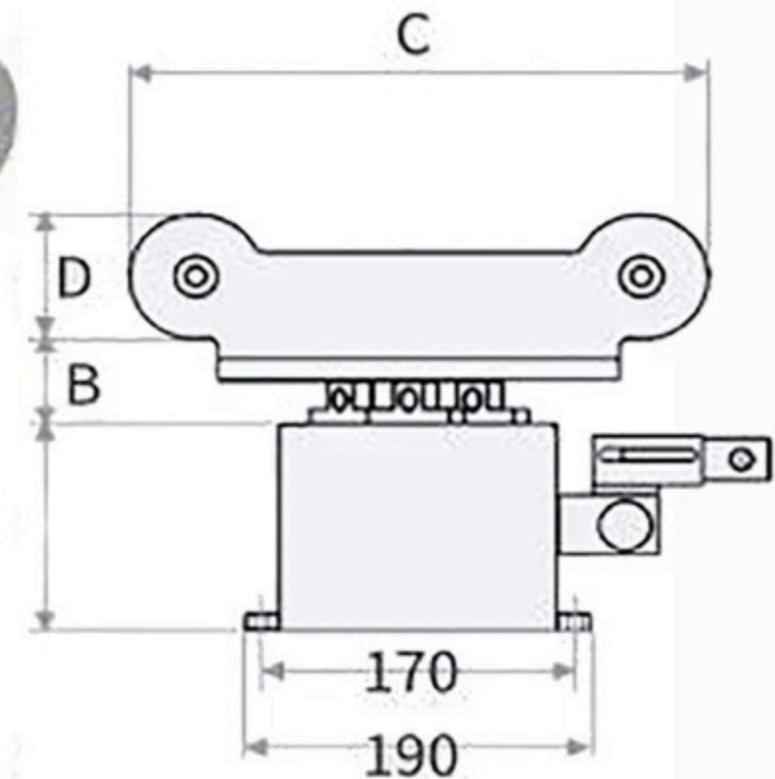
PS-400S



US-400S



Z3K-T5



- * DC Brushless Servo Motor, Maintenance Free
- * High precision screw ball, high position accuracy
- * The Encoder pulse position
- * EPC / CPC / LPC multimode option
- * Speed: 40MM/S automatically match with line Speed
- * Temperature: -10/60°C / RH90%
- * Power Input: AC220V / 80W
- * Large guide Stroke

Model	L(MM)	D(MM)	C(MM)	B(MM)	Y(MM)	Roller Diameter	N	Degree
JL-200A	200	60	280	25	280	50mm	200	+/- 17
JL-300A	300	60	280	25	280	50mm	200	+/- 17
JL-400A	400	60	320	25	400	50mm	300	+/- 17
JL-500A	500	60	320	25	400	50mm	300	+/- 17
JL-600A	600	60	320	25	500	50mm	350	+/- 17

ELECTRONIC LINE GUIDE SYSTEM- AEG-4300

- 4.3" Colorful Touch Screen with Live Animated Track Control Display
- **Rapid Response** : Powered by a high-speed processor for seamless and quick interaction.
- **Auto/Manual Mode** : Easily switch between automated control or manual operation, offering versatile functionality for various applications.
- **End-Travel Limit Detection** : Integrated proximity switches automatically detect and indicate the travel limits on both sides, with a visual RED warning on the screen for clear feedback.
- **Custom Branding** : Display your company logo or custom image on startup for enhanced brand visibility.
- **Rugged Durability** : Our controller is crafted with a durable aluminum body, designed to withstand both high temperatures and physical impact, ensuring long-lasting performance and reliability.
- **Input power supply** : 24V DC /10A
- **Output** : 0-24V DC /10A
- **Dimension in mm** : 150mm(W) x 110mm (H) x 40mm (D)
- **Panel Cutout in mm** : 142mm(W) x 102mm(H)



COLOUR TRACKING SENSOR

- Model : TLU 011
- Sensor Type : Photo electric
- Minimum spot dimension : 1.5x5mm/2x7mm
- Ripple: : 2VPP Max
- Response Time : 50µs MAX
- Switching Frequency : 10KHz
- Input : 10-30V DC
- Output : 0-5.5V DC
- Material which can Be : Detection of transparent,
- Detected : opaque, coloured material.
- Normally used to detect colour line.



ACTUATOR

- The actuator features a high-performance PMDC motor, precision linear ball screw, and guide system with integrated gearing for smooth operation.
- Standard stroke length is 150mm (+/- 75mm), customizable to meet specific needs.
- It offers easy installation, a maintenance-free design, and includes a slider assembly and bar holder for seamless integration.



AUTO TENSION CONTROLLER-ATC-4300



- **4.3" Colorful Touch Screen** with live, animated tension control display for intuitive monitoring
 - **Fast Response** enabled by a high-speed processor for seamless operation.
 - **Consistent Tension** : from zero speed to maximum, ensuring precise control at all speeds.
 - **Flexible Input Options** : supporting load cell or ultrasonic diameter sensor inputs to control powder or pneumatic brakes.
 - **Auto/Manual Mode** : for versatile operation, catering to different user preferences.
 - **Customizable Display** : allowing the customer's logo to appear briefly every time the system is powered on, thanks to the graphical touch screen interface.
 - **Rugged Durability** : The controller is crafted with a durable aluminum body, designed to withstand both high temperatures and physical impact, ensuring long-lasting performance and reliability.
-
- **Power supply** : 24V DC /4A
 - **Dimension in mm** : 150mm(W)x 110mm (H) x 40mm (D)
 - **Panel Cutout in mm** : 142mm(W) x 102mm(H)



**SINGLE-SHAFT
MAGNETIC
POWDER BRAKE**



LOAD CELL

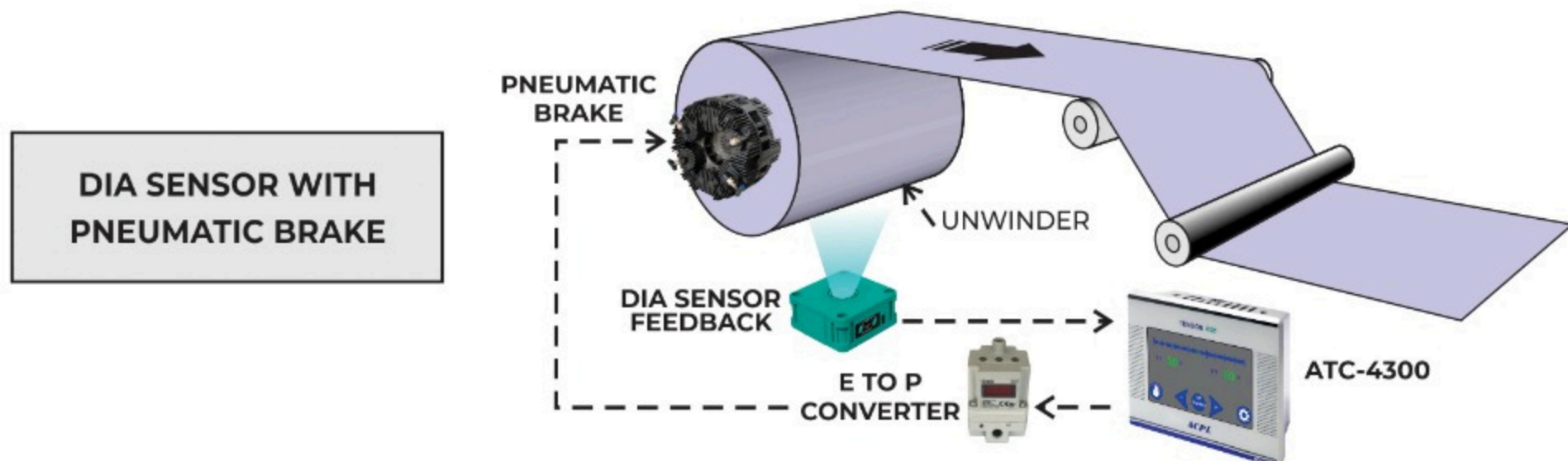
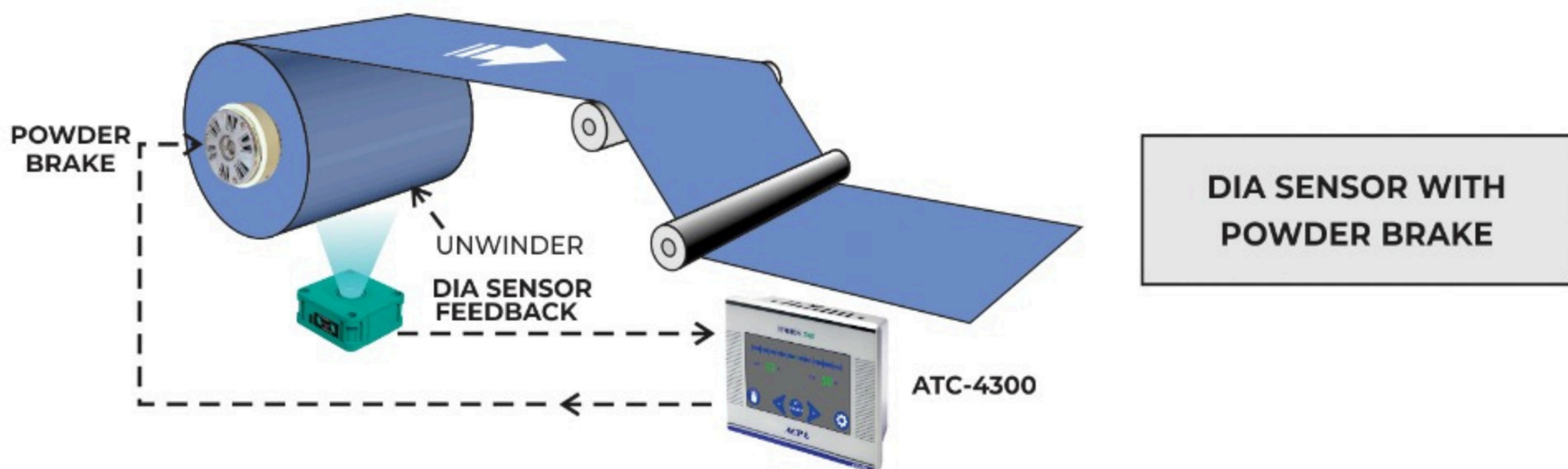
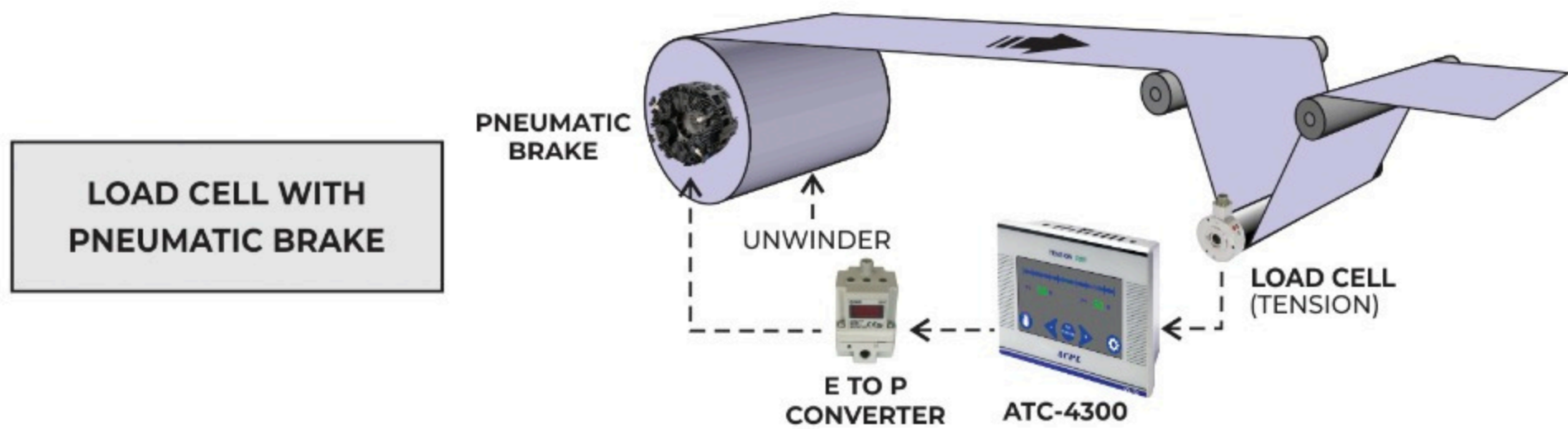
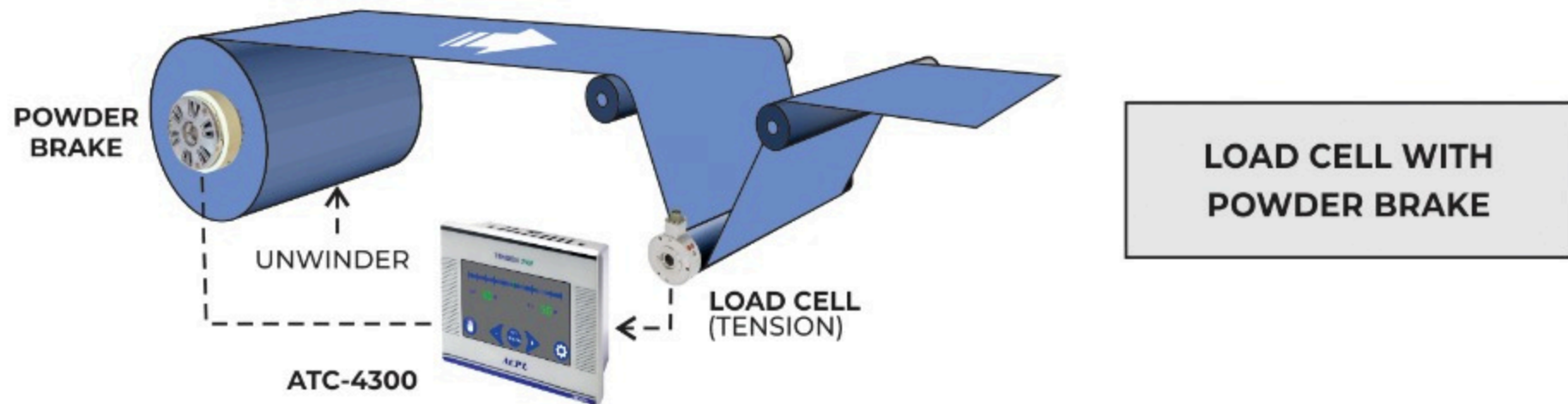


**PNEUMATIC
BRAKE**



**ULTRASONIC
DIAMETER SENSOR**

AUTO TENSION CONTROL SYSTEMS-ATC-4300

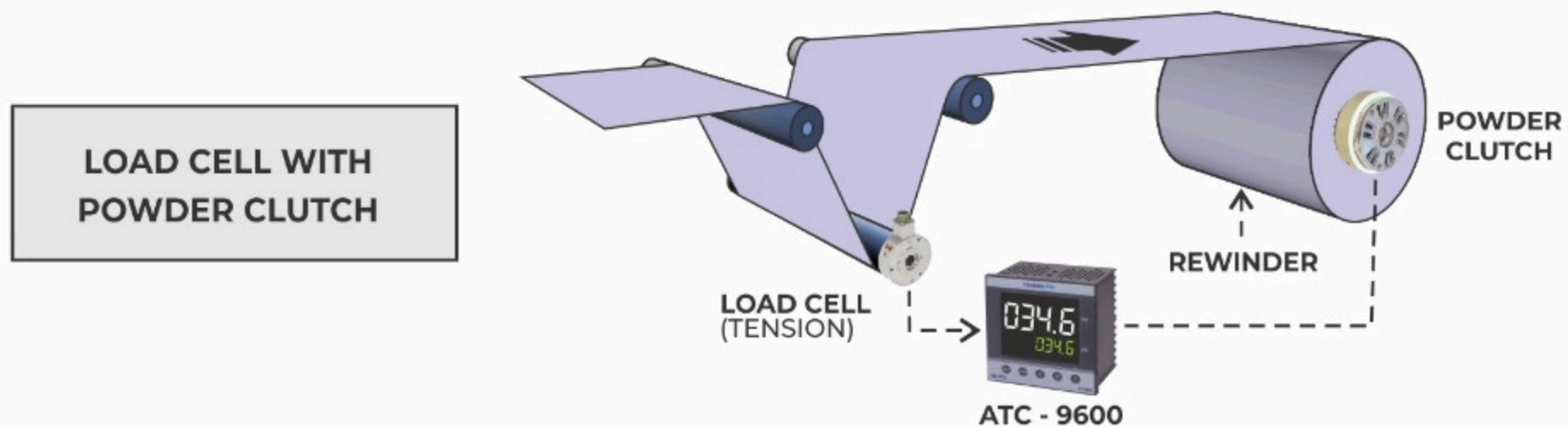
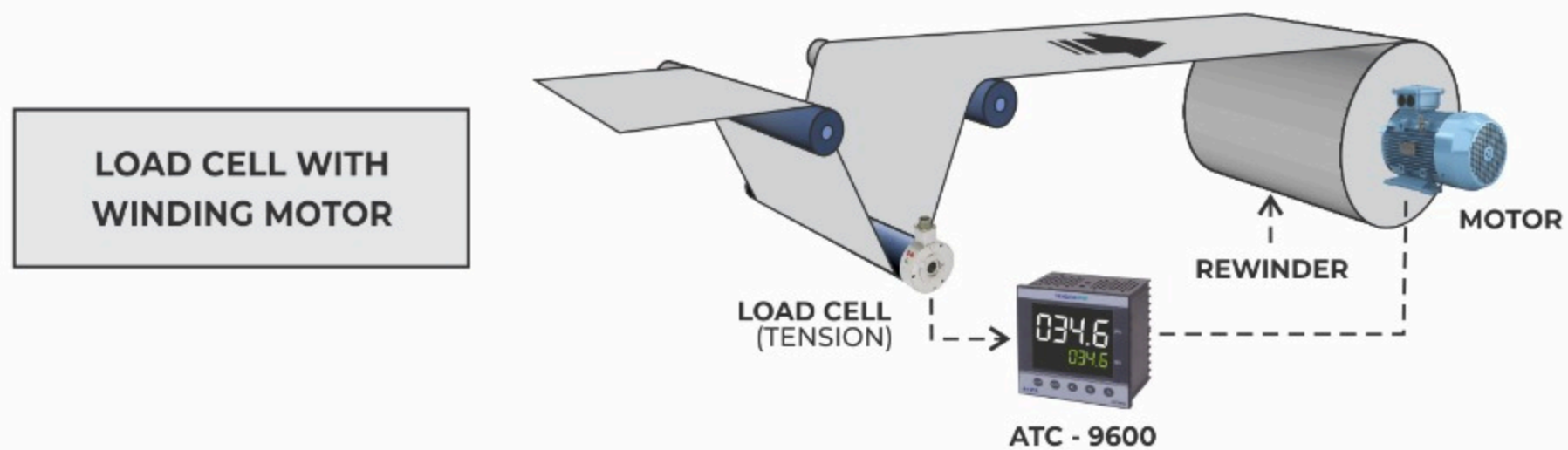
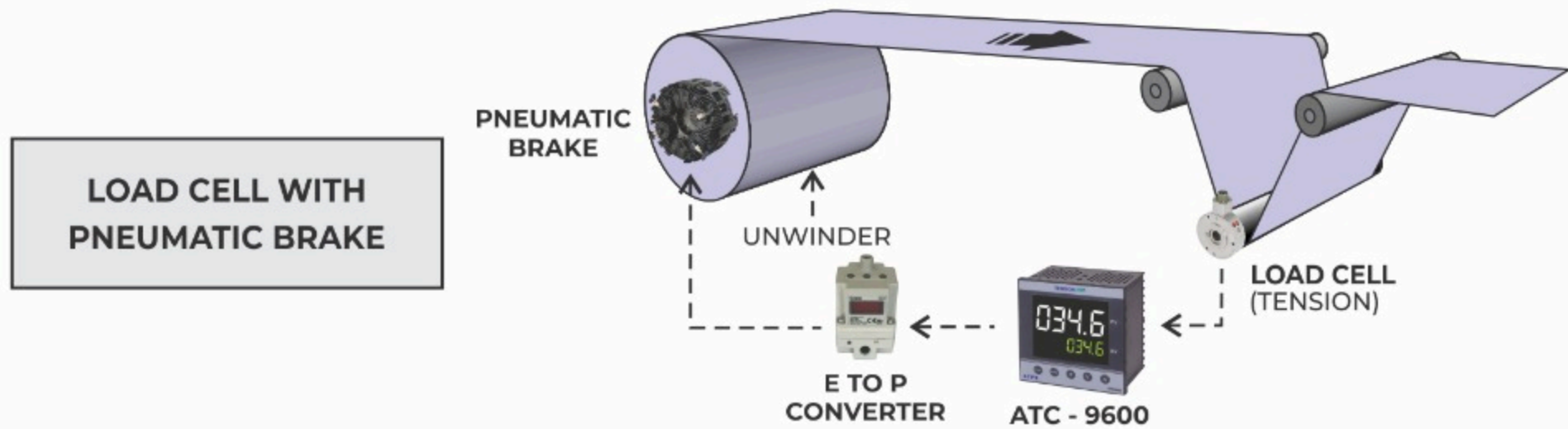
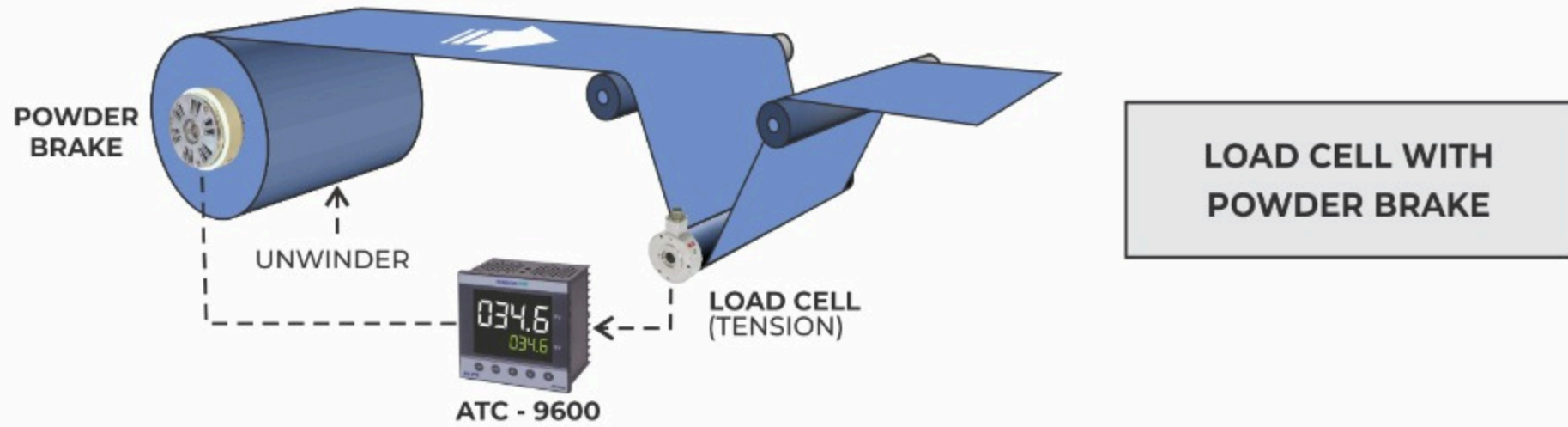


TENSION PRO - ATC9600



- **Flexible Input Options:** Supports a wide range of input signal types for maximum compatibility, including 0-20 mA, 4-20 mA, 0-5V, and 0-10V, allowing seamless integration into various systems.
- **Dual Output Options:** Equipped with two versatile outputs, selectable between 0-5V, 0-10V, 0-20 mA, and 4-20 mA, ensuring precise tension control and easy interfacing with connected equipment.
- **Autotuning PID Algorithm:** Features an advanced autotuning PID algorithm that continuously adjusts and optimizes control parameters for superior performance, ensuring accurate tension regulation in dynamic applications.
- **RS-485 Communication:** Includes RS-485 communication protocol for robust, long-distance data transmission and easy integration into industrial control networks, enabling remote monitoring and control.
- **Built-in Load Cell Amplifier:** Incorporates an integrated load cell amplifier for direct measurement and processing of tension data, minimizing the need for external devices and ensuring reliable, real-time performance.
- This Tension Controller is designed for high-performance applications where precision and reliability are paramount, offering a comprehensive solution for tension monitoring and control in a variety of industrial applications.
- **Power Supply :** 220V AC
- **Dimensions :** 96mm(W) x 96mm(H) x 57mm(D)
- **Panel Cutout :** 92mm(W) x 92mm(H)

AUTO TENSION CONTROL SYSTEMS- ATC-9600



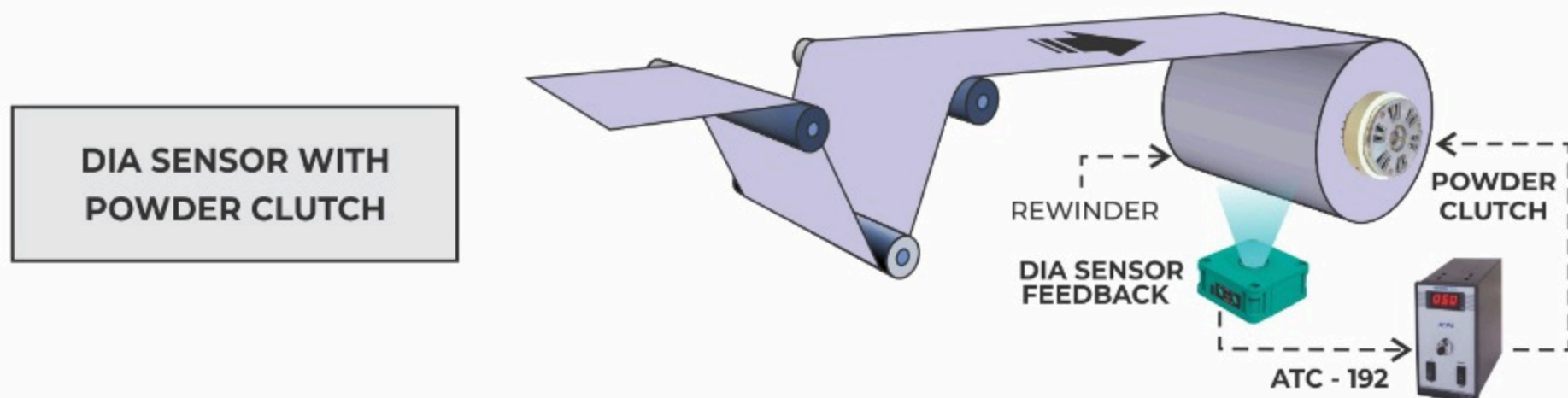
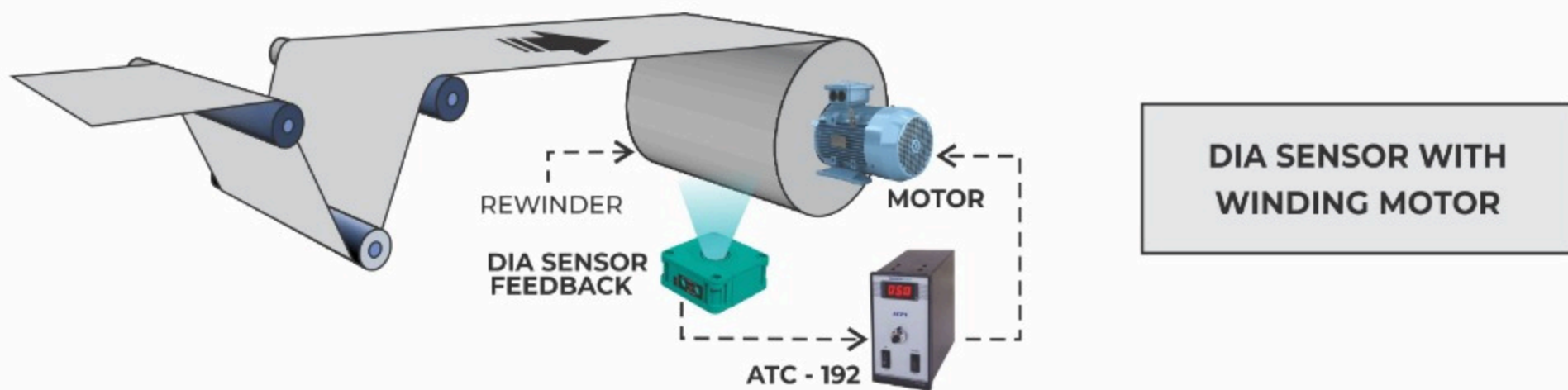
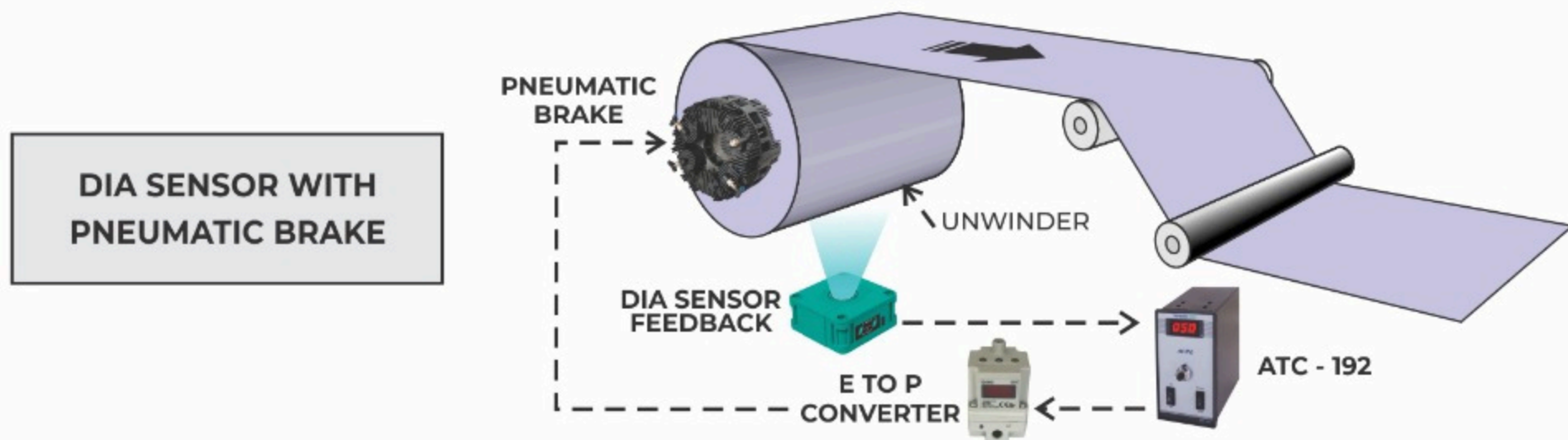
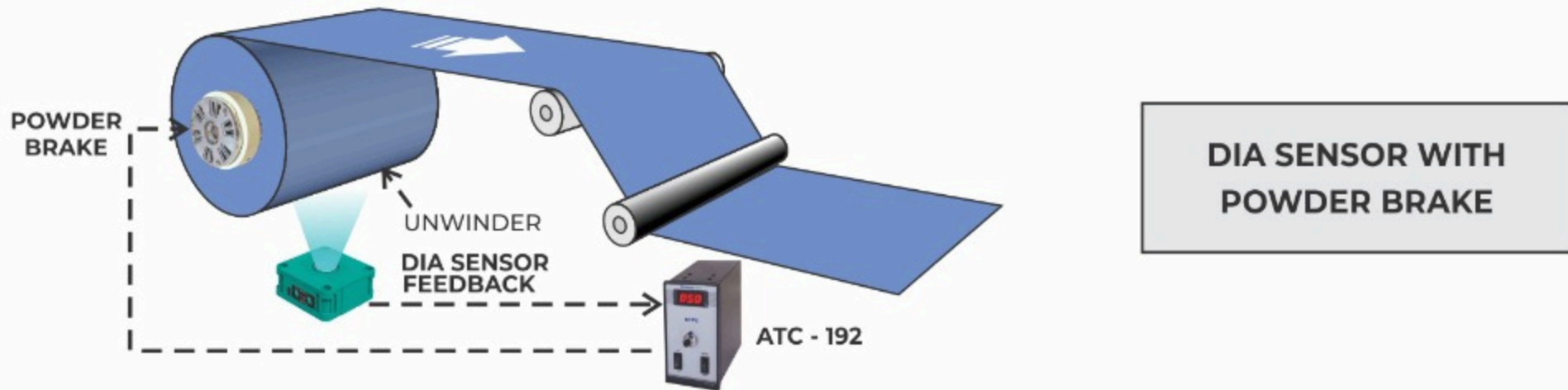
TENSION PRO- ATC192

CONVERTING MACHINES

- **Self-Sufficient Operation:** The ATC-192 operates without the need for any external circuitry, providing a hassle-free setup and reducing installation time and complexity.
- **Space-Saving Compact Design:** Featuring a sleek, compact form factor, this device is designed for easy integration into space-constrained environments, ensuring optimal utilization of panel space.
- **No External Power Modulator Required :** Built to operate efficiently without the need for an external power modulator, streamlining your system's setup and reducing additional components.
- **Flexible Response Modes :** Capable of operating in both linear and non-linear response modes, providing the flexibility to choose the best configuration based on the specific application requirements.
- The **ATC-192** is the perfect solution for applications that demand a reliable, compact, flexible, and cost-effective control system, particularly for larger diameter rolls.
- **Power Supply** : 220V AC
- **Compact Dimensions** : 192mm (H) x 96mm (W) x 170mm (D)
- **Panel Cutout** : 188mm (H) x 92mm (W)

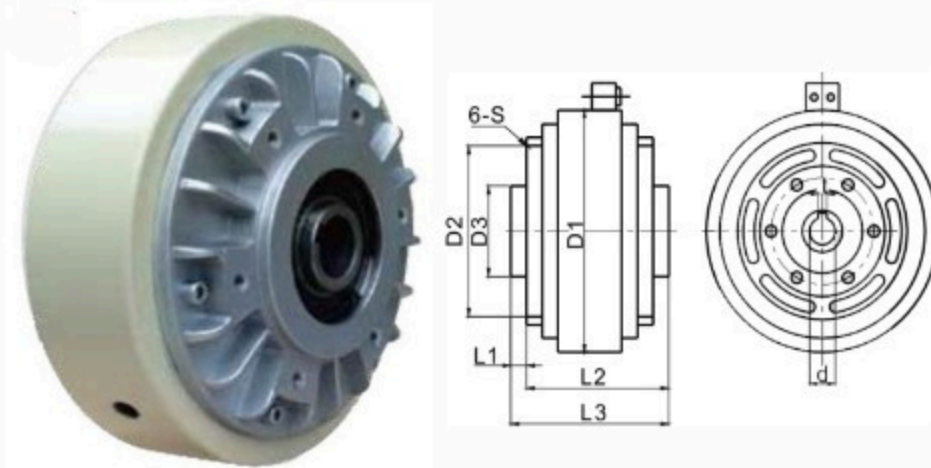


AUTO TENSION CONTROL SYSTEM- ATC-192

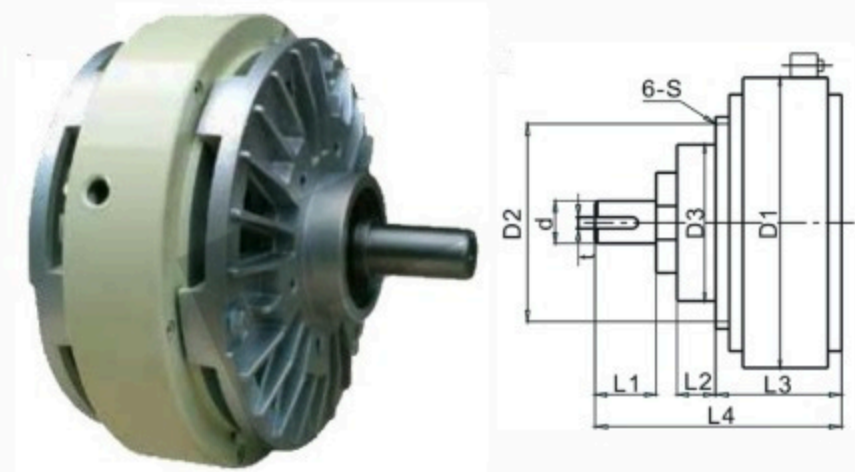


MAGNETIC POWDER BRAKE

1 FZ6-200K-CELLULAR TYPE



2 FZ6-400A-CELLULAR TYPE



1 FZ6-200K-HOLLOW SHAFT MAGNETIC POWDER BRAKE

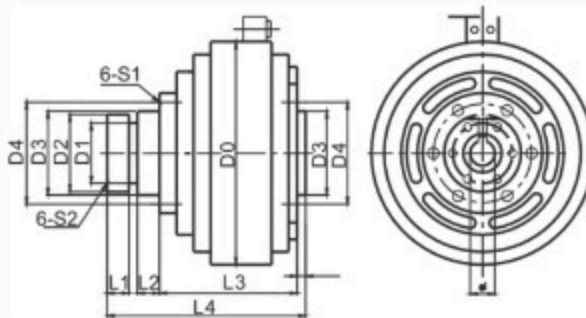
MAIN TECHNICAL PARAMETERS						OVERALL DIMENSION									
MODEL	TORQUE (N.m)	CURRENT (A)	VOLTAGE (V)	SPEED (RPM)	WEIGHT (Kg)	D1	D2	D3	L1	L2	L3	6-S	d	T	MAGNETIC POWDER (gm)
FZ6K	6	0.8	24	1000	3	130	62	52	3	57	60	M4	16	16	10
FZ12K	12	1	24	1000	4.5	150	82	65	4	68	72	M5	20	20	20
FZ25K	25	1.5	24	1000	7.5	182	110	90	4	80	84	M6	25	25	30
FZ50K	50	1.8	24	1000	12	219	130	110	5	90	95	M8	30	30	60
FZ100K	100	2	24	800	20.5	260	140	120	5	105	110	M10	35	35	110
FZ200K	200	2.8	24	800	30	335	170	150	5	115	120	M10	45	45	180

2 FZ6-400A-SINGLE SHAFT MAGNETIC POWDER BRAKE

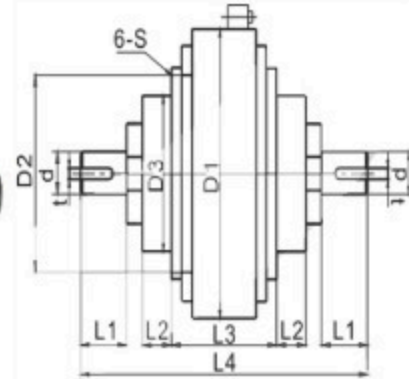
MAIN TECHNICAL PARAMETERS						OVERALL DIMENSION										
MODEL	TORQUE (N.m)	CURRENT (A)	VOLTAGE (V)	SPEED (RPM)	WEIGHT (Kg)	D1	D2	D3	L1	L2	L3	L4	6-S	d	T	MAGNETIC POWDER (gm)
FZ6A	6	0.8	24	1400	4	130	62	44	25	10	68	108	M4	12	4	10
FZ12A	12	1	24	1400	6.5	157	62	50	30	15	84	128	M5	16	5	20
FZ25A	25	1.5	24	1400	9.5	182	78	58	40	16	93	154	M6	20	6	30
FZ50A	50	1.8	24	1400	15	220	100	75	50	20	104	178	M6	25	8	60
FZ100A	100	2	24	1000	30	290	120	90	65	25	140	230	M8	30	8	110
FZ200A	200	2.5	24	1000	55	335	140	110	70	30	168	272	M10	35	10	180
FZ400A	400	3	24	1000	80	398	200	130	99	35	188	336	M14	45	14	300

MAGNETIC POWDER CLUTCH

3 FZ6-400K-CELLULAR TYPE



4 FL6-400A-DOUBLE SHAFT



3 FZ6-400K-HOLLOW SHAFT MAGNETIC POWDER CLUTCH

MAIN TECHNICAL PARAMETERS						OVERALL DIMENSION												
MODEL	TORQUE (N.m)	CURRENT (A)	VOLTAGE (V)	SPEED (RPM)	WEIGHT (Kg)	D0	D1	D2xL1	D3xL2	D4	L3	L4	L5	d	T	6-S2	6-S1	MAGNETIC POWDER (gm)
FL6K	6	0.8	24	1400	4	130	50	60x16	65x7	70	64	91	3	16	5	M4	M5	10
FL12K	12	1	24	1400	6.5	157	60	70x18	72x8	80	77	107	3	20	6	M4	M5	20
FL25K	25	1.5	24	1400	9.5	182	71	80x20	82x10	97	88	129	4	25	8	M5	M6	30
FL50K	50	1.8	24	1000	15	219	85	95x22	97x11	110	105	147	4	30	8	M6	M6	60
FL100K	100	2	24	1000	32	290	105	125x24	128x14	145	134	182	5	35	10	M8	M8	110
FL200K	200	2.5	24	1000	50	335	125	140x28	145x17	165	145	200	5	45	14	M8	M10	180

4 FL6-400A-DOUBLE SHAFT MAGNETIC POWDER CLUTCH

MAIN TECHNICAL PARAMETERS						OVERALL DIMENSION										
MODEL	TORQUE (N.m)	CURRENT (A)	VOLTAGE (V)	SPEED (RPM)	WEIGHT (Kg)	D1	D2	D3	L1	L2	L3	L4	6-S	d	T	MAGNETIC POWDER (gm)
FL6A	6	0.8	24	1400	4	130	62	44	25	10	72	152	M4	12	4	10
FL12A	12	1	24	1400	6.5	157	62	50	30	15	93	180	M5	16	5	20
FL25A	25	1.5	24	1400	9.5	182	78	58	40	16	102	218	M6	20	6	30
FL50A	50	1.8	24	1400	15	220	100	75	50	20	112	260	M6	25	8	60
FL100A	100	2	24	1000	30	290	120	90	65	25	160	340	M8	30	8	110
FL200A	200	2.5	24	1000	55	335	140	110	70	30	190	396	M10	35	10	180
FL400A	400	3	24	1000	80	398	200	130	90	35	221	510	M12	45	14	300

ACPL

passion 4 automation

SERVO REDUCER

PLANETARY GEARBOX FOR SERVO MOTOR

A **Nidec** Group Company

SHIMPO

Nidec

Made in Japan
Inline & Right Angle

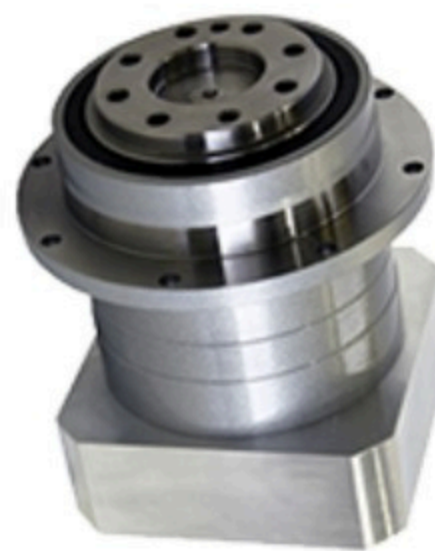
VRS



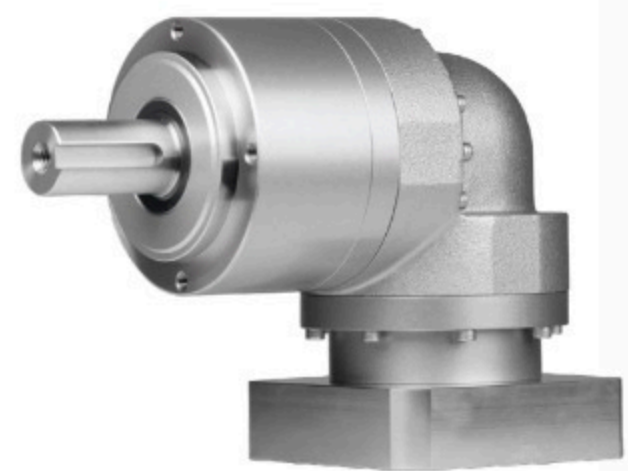
VRL



VRT



EVL



SESAME

Planetary Gearbox
Made in Taiwan

PBE



PBC



PGF



PNSR



PLANETARY GEARBOX

MANUAL TENSION CONTROLLER

- On/Off Switch with Digital Display
- Precise Digital Display : Clearly shows % tension for accurate monitoring and control.
- Variable Tension Control : Adjustable potentiometer (POT) to set tension from 0% to 100%, providing flexibility for various applications.
- Durability & Reliability : Built for long-lasting, trouble-free performance, ensuring consistent operation over time.
- Top Seller : Our highest-selling product, trusted by users for its quality and performance.
- Dimensions in mm: 175mm(H) x 175mm(W) x 115mm(D)



TORQUE DRIVES & TORQUE MOTOR

- **ACPL** is the only company offering both digital **Voltage** and **Ampere** monitoring for precise control.
- With over 10,000 drives in operation worldwide, we're trusted for quality and performance.
- Our solutions include wall-mounted and cut-out fixing models, along with isolated programmable torque drives which can also be operated PLC systems.
- We also provide high-performance torque motors for applications requiring constant torque at reduced RPM, primarily for winding.
- TD-192- Dimensions : 192mm(H) x 96mm(W) x 170mm(D)
- TD-175 Dimensions : 175mm(H) x 175mm(W) x 115mm(D)
- Panel Cut out : 188mm(H) x 92mm(W)

